



# COUTURE | BOOK<sup>®</sup>

Our mission at COUTURE BOOK is to create luxury, one-of-a-kind, handmade Coffee Table Books for your digital photos. We apply the highest standards of integrity, creativity, quality, and innovation to create the most beautiful books in the world.

Simply stated, at COUTURE BOOK, we combine old-world binding techniques coupled with the latest technology in printing to create stunning, one of a kind, heirloom books. Using the most beautiful fabrics from around the world to design and handcraft each book, we appeal to the tastes of the most sophisticated customer. From conception to customer, each Couture Book piece stands alone on the strengths of its design and artistry and reflects our standard of superlative quality and care.

Giving back is an integral part of who we are and the way we do business. At the end of your Couture Book experience, we ask you to choose a charity through our “Build a Better World” program. COUTURE BOOK is proud to donate part of the proceeds from your book to charities that are making difference. The COUTURE BOOK brand stands for more than the creation of beautiful books, it symbolizes our commitment to you, to our community, to our country, our planet... Together we can build a new world.

# Unique Features

## MATERIALS:

Only the best materials available are utilized in the production process-- from fabrics imported from all reaches of the world, to French silk thread for the binding.



## CRAFTSMANSHIP:

Each book is made by hand by master craftspeople in the USA to our exacting standards. We utilize old-world binding techniques to ensure the books will last generations.



Due to the hand craftsmanship of each book, books can take from 4-5 weeks complete.

Archival quality inks and highest standard acid-free papers are used. There are 6 paper types to choose from--available on any style.

## TECHNOLOGY:

The latest in digital offset printing from HP Indigo is utilized and quality checked daily to the highest degree. The latest internet technology ensures a seamless ordering experience.



## ENVIRONMENT:

All books are printed on paper with at least 50% recycled content and are shipped with recyclable packaging. Earth Collection books printed on 100% recycled paper powered by wind energy.

## CUSTOMIZATION:

Given our range of abilities, any of the books can be customized to your liking, and in addition, you can create a unique designed book of your own. Just contact us.

# The Difference



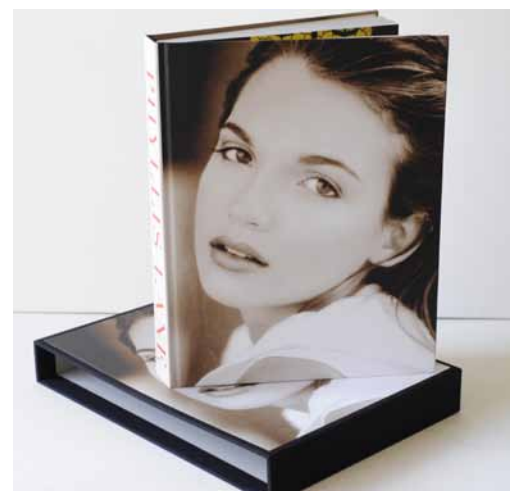
Our Smyth sewn binding technique is unique in the industry, and you won't find it anywhere else, unless you buy a published book in a bookstore. We carefully hand fold each page into signatures, and sew each signature together to make a super strong binding. We then glue the binding with an archival glue to ensure longevity and flexibility.

What this means for you is that your book can be up to 300 pages (sides) or more, and it still allows your book to lay open flat. Other companies use an adhesive or side-stitched binding that clamps the book block together preventing the book from laying flat. Our binding method is the superior quality, and has been used in traditional bookbinding for generations.

# East Hampton

NYC Collection

The East Hampton style is defined by the full bleed cover and black linen slipcase with mounted front and back cover image. The slipcase images can match your cover or can be different. You can also have no images on your slipcase. Your choice. Choose whatever paper you like, and customize with printed end-sheets or vellum inserts for additional cost.



# Soho

NYC Collection

The Soho style is defined by the imported Japanese linen cloth spine with printed front and back cover, or optionally fabric back cover. Available in 6 colors, but you can customize with any fabric. Matching slipcase and endsheets. Choose whatever paper you like, and customize with printed endsheets or vellum inserts for additional cost.



SPINE AND SLIPCASE COLORS:



BEIGE



GREY



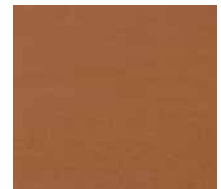
BLACK



LAVENDER



RED



BROWN

# Madison

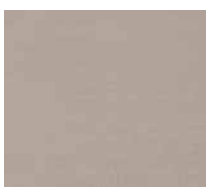
The Madison style is basically a Soho style with a fully wrapped fabric cover with matching slipcase. You can optionally mount an image on your cover. Choose whatever paper you like, and customize with printed endsheets or vellum inserts for additional cost.



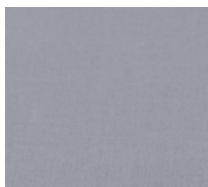
Beige cover with custom die blind stamping



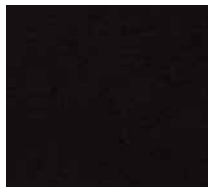
LINEN COLORS:



BEIGE



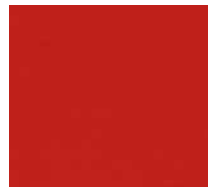
GREY



BLACK



LAVENDER



RED



BROWN